

ALL-TIME OPPONENT SERIES HISTORY



CU Ranking	Opp. Ranking	CU Ranking	Opp. Ranking	CU Ranking	Opp. Ranking	CU Ranking	Opp. Ranking		
ADAMS STATE (2-0) (Home: 2-0) Nov. 29, 1982 W 100-58 (H) Nov. 23, 1985 W 106-54 (H)		Jan. 1, 1991 W 75-69 (A)* Nov. 24, 1991 W 74-53 (H)		Dec. 7, 1985 W 75-62 (N) Dec. 21, 1992 W 84-58 (A) 13/13 Jan. 2, 1996 W 81-59 (H) 13/6 Jan. 22, 1997 W 83-60 (H) Jan. 10, 1998 L 57-76 (A) Feb. 20, 1999 L 52-62 (H) Feb. 23, 2000 L 90-91 (A)* Feb. 3, 2001 W 85-66 (H) 23/RV 20/22 Feb. 20, 2002 L 69-80 (A) 11/13 9/8 Jan. 29, 2003 W 66-59 (H) Jan. 7, 2004 W 69-59 (A) 14/14 24/RV 6/8 Feb. 26, 2005 L 65-84 (H) 10/10 Feb. 22, 2006 L 40-86 (A) 14/14 Feb. 21, 2007 L 67-75 (H) 8/8 Feb. 27, 2008 L 62-76 (A) 6/5 Jan. 10, 2009 L 50-63 (H) 15/17 Feb. 6, 2010 L 42-76 (A) 16/18 Mar. 11, 2010 L 65-72 (N)		UC-SANTA BARBARA (1-3) (Home: 1-1, Away: 0-2) Mar. 20, 1993 W 81-54 (H) 9/9 Dec. 21, 1996 L 59-70 (A) RV/25 Dec. 30, 1997 L 77-83 (H) 21/23 Mar. 20, 2004 L 49-76 (A) 17/13 RV/-			
AIR FORCE (3-0) (Home: 2-0, Away: 1-0) Jan. 28, 1978 W 78-57 (H) Feb. 3, 1979 W 90-69 (A) Dec. 5, 2001 W 80-47 (H) 15/14		ARIZONA STATE (9-0) (Home: 5-0, Away: 3-0, Neutral: 1-0) Feb. 22, 1975 W 71-44 (H) Feb. 12, 1976 W 55-46 (A) Feb. 3, 1977 W 84-77 (H) Jan. 20, 1978 W 83-55 (H) Jan. 27, 1979 W 77-64 (A) Dec. 6, 1980 W 72-64 (A) Nov. 19, 1983 W 95-73 (H) 16 Jan. 4, 1985 W 86-68 (N) Dec. 9, 1987 W 103-63 (H)		BOSTON UNIVERSITY (1-0) (Neutral: 1-0) Dec. 1, 1990 W 94-56 (N)		CAL POLY-POMONA (0-1) (Neutral: 0-1) Dec. 18, 1987 L 68-74 (N)			
ALBANY (1-0) (Home: 1-0) Nov. 17, 2000 W 93-43 (H)		ARKANSAS (2-1) (Home: 1-0, Away: 1-1) Jan. 9, 1992 L 51-56 (A) Dec. 8, 1992 W 94-67 (H) 19/17 Nov. 21, 1995 W 73-71 (A) 11/11 9/9		BOWLING GREEN (2-0) (Home: 2-0) Nov. 29, 1996 W 74-62 (H) 18/13 Nov. 23, 2001 W 96-44 (H) 14/12		CAL STATE BAKERSFIELD (1-0) (Home: 1-0) Dec. 28, 2006 W 76-61 (H)			
ALCORN STATE (1-0) (Neutral: 1-0) Dec. 8, 1996 W 62-45 (N) 17/13		ARKANSAS-PINE BLUFF (1-0) (Home: 1-0) Dec. 2, 2008 W 73-39 (H)		BRIGHAM YOUNG (8-7) (Home 8-3, Away 2-5, Neutral 1-0) Feb. 15, 1975 L 44-60 (A) Feb. 7, 1976 L 77-81 (H) Jan. 29, 1977 L 65-89 (A) Feb. 24, 1978 L 69-84 (H) Mar. 2, 1979 L 82-99 (A) Mar. 7, 1980 L 91-101 (A) Mar. 6, 1981 W 97-82 (N) Jan. 29, 1982 W 109-75 (H) Feb. 20, 1982 L 75-77 (A) Nov. 18, 1983 W 89-72 (H) Jan. 8, 1986 W 85-84 (A) Nov. 23, 1996 W 78-73 (A) 18/15 Nov. 22, 1997 W 84-68 (H) 18/16 Mar. 11, 1999 W 70-53 (H) Mar. 22, 2003 W 84-45 (H)		BUFFALO (2-0) (Home: 1-0, Away: 1-0) Jan. 2, 2003 W 76-47 (A) 25/25 Jan. 3, 2004 W 98-47 (H) 13/13		CAL STATE FULLERTON (4-1) (Home: 2-0, Away: 1-1, Neutral: 1-0) Dec. 3, 1981 W 89-77 (N) Dec. 12, 1986 W 77-51 (H) Dec. 30, 1987 W 77-63 (A) Nov. 18, 2005 W 100-71 (H) Dec. 7, 2006 L 77-89 (A)	
AMERICAN (1-0) (Neutral: 1-0) Dec. 4, 1998 W 90-70 (N)		AUBURN (0-1) (Home: 0-1) Mar. 17, 1996 L 61-68 (H)* 19/17 19/18		CHARLESTON (1-0) (Neutral: 1-0) Dec. 20, 1985 W 81-66 (N)		CAL STATE NORTHBRIDGE (1-0) (Home: 1-0) Nov. 19, 2006 W 80-64 (H)			
ARIZONA (6-3) (Home: 4-1, Away: 2-2) Feb. 21, 1975 L 36-75 (H) Feb. 14, 1976 L 65-70 (A)* Feb. 5, 1977 W 79-58 (H) Feb. 18, 1978 W 73-64 (H) Feb. 22, 1979 W 90-71 (A) Dec. 11, 1988 L 69-75 (A)* 20 Dec. 31, 1989 W 78-69 (H)		BAYLOR (8-11) (Home: 5-4, Away: 2-6, Neutral: 1-1) Dec. 22, 1980 W 75-50 (H) 20		CHARLOTTE (1-0) (Home: 1-0) Nov. 25, 2006 W 78-65 (H)		CENTRAL FLORIDA (1-0) (Home: 1-0) Nov. 16, 2008 W 93-63 (H)			
ARIZONA STATE (1-0) (Neutral: 1-0) Dec. 8, 1996 W 62-45 (N) 17/13		BAYLOR (8-11) (Home: 5-4, Away: 2-6, Neutral: 1-1) Dec. 22, 1980 W 75-50 (H) 20		CALIFORNIA (4-0) (Home: 2-0, Away: 2-0) Dec. 4, 1981 W 67-56 (A) Nov. 27, 1988 W 83-68 (H) Dec. 8, 2002 W 66-47 (A) Nov. 29, 2003 W 79-63 (H) 20/16		CENTRAL MICHIGAN (2-0) (Home 2-0) Dec. 21, 1990 W 63-60 (H) Nov. 29, 1997 W 71-49 (H) 16/17			
ARIZONA STATE (1-0) (Neutral: 1-0) Dec. 8, 1996 W 62-45 (N) 17/13		BAYLOR (8-11) (Home: 5-4, Away: 2-6, Neutral: 1-1) Dec. 22, 1980 W 75-50 (H) 20		UTAH (2-2) (Home: 1-1, Away: 1-1) Dec. 22, 1983 L 66-91 (A) Dec. 22, 1984 L 70-77 (H) Dec. 2, 2000 W 88-63 (H) Dec. 8, 2001 W 79-48 (A) 15/14		CHARLESTON (1-0) (Neutral: 1-0) Dec. 20, 1985 W 81-66 (N)			
ARIZONA STATE (1-0) (Neutral: 1-0) Dec. 8, 1996 W 62-45 (N) 17/13		BAYLOR (8-11) (Home: 5-4, Away: 2-6, Neutral: 1-1) Dec. 22, 1980 W 75-50 (H) 20		UTAH (2-2) (Home: 1-1, Away: 1-1) Dec. 22, 1983 L 66-91 (A) Dec. 22, 1984 L 70-77 (H) Dec. 2, 2000 W 88-63 (H) Dec. 8, 2001 W 79-48 (A) 15/14		CHARLOTTE (1-0) (Home: 1-0) Nov. 25, 2006 W 78-65 (H)			
ARIZONA STATE (1-0) (Neutral: 1-0) Dec. 8, 1996 W 62-45 (N) 17/13		BAYLOR (8-11) (Home: 5-4, Away: 2-6, Neutral: 1-1) Dec. 22, 1980 W 75-50 (H) 20		UTAH (2-2) (Home: 1-1, Away: 1-1) Dec. 22, 1983 L 66-91 (A) Dec. 22, 1984 L 70-77 (H) Dec. 2, 2000 W 88-63 (H) Dec. 8, 2001 W 79-48 (A) 15/14		COLORADO COLLEGE (2-0) (Home: 2-0) Nov. 20, 1981 W 97-39 (H) Feb. 15, 1983 W 83-58 (H)			
ARIZONA STATE (1-0) (Neutral: 1-0) Dec. 8, 1996 W 62-45 (N) 17/13		BAYLOR (8-11) (Home: 5-4, Away: 2-6, Neutral: 1-1) Dec. 22, 1980 W 75-50 (H) 20		UTAH (2-2) (Home: 1-1, Away: 1-1) Dec. 22, 1983 L 66-91 (A) Dec. 22, 1984 L 70-77 (H) Dec. 2, 2000 W 88-63 (H) Dec. 8, 2001 W 79-48 (A) 15/14		COLORADO STATE (30-11) (Home: 20-2, Away: 10-9) Jan. 31, 1975 L 53-74 (H) Feb. 6, 1975 L 42-81 (A) Nov. 20, 1975 W 53-38 (A) Jan. 23, 1976 W 85-49 (H) Jan. 29, 1976 W 70-41 (H) Dec. 3, 1976 W 90-79 (H) Jan. 14, 1977 W 62-40 (A) Nov. 17, 1977 W 86-62 (H) Mar. 2, 1978 L 69-80 (A) Nov. 17, 1978 W 83-60 (A) Jan. 13, 1979 W 97-55 (H) Nov. 16, 1979 W 112-48 (H) Dec. 20, 1980 W 94-77 (A) 20 Dec. 19, 1981 W 79-76 (H) 18 Mar. 13, 1982 W 70-61 (H) Nov. 20, 1982 W 78-49 (H) Dec. 2, 1982 W 90-56 (H) Dec. 8, 1982 W 72-60 (A) Dec. 7, 1983 W 82-69 (H) Jan. 10, 1984 L 48-63 (A) Dec. 5, 1984 L 56-61 (A) Dec. 11, 1985 W 89-61 (H) Dec. 10, 1986 W 75-64 (A) Jan. 9, 1988 W 82-59 (H) Dec. 30, 1988 W 74-47 (A) Dec. 30, 1989 W 91-61 (H) Jan. 5, 1991 L 51-57 (A) Nov. 26, 1991 W 77-50 (H)			





ALL-TIME OPPONENT SERIES HISTORY

CU Ranking	Opp. Ranking	CU Ranking	Opp. Ranking	CU Ranking	Opp. Ranking	CU Ranking	Opp. Ranking				
Dec. 10, 1992 W	90-69 (A)	19/17		FLATIRONS (1-0) <i>(Home: 1-0)</i>		HOUSTON (1-1) <i>(Home: 1-1)</i>		Jan. 23, 1994 W	73-48 (H)	6/6	
Nov. 30, 1993 W	75-55 (H)	11/12		Nov. 28, 1975 W	49-42 (H)	Dec. 4, 1987 L	78-79 (H)	Feb. 18, 1994 W	79-52 (A)	3/3	
Dec. 1, 1999 L	67-73 (A)			FLORIDA (1-1) <i>(Home: 1-0, Away: 0-1)</i>		Nov. 24, 2001 W	88-58 (H)	14/12	Mar. 5, 1994 W	66-55 (N)	3/3
Dec. 6, 2000 L	70-72 (H)			Dec. 22, 2000 W	98-62 (H)	16/16		HOWARD (1-0) <i>(Home: 1-0)</i>	Jan. 20, 1995 W	67-50 (A)	6/6
Nov. 28, 2001 L	69-81 (A)	11/10	15/16	Dec. 21, 2001 L	50-61 (A)	14/12	20/20	Feb. 19, 1995 W	83-38 (H)	3/3	
Dec. 12, 2002 W	65-51 (H)			FLORIDA INTERNATIONAL (1-0) <i>(Away: 1-0)</i>		Nov. 24, 2000 W	96-45 (H)	Mar. 4, 1995 W	73-38 (N)	3/3	
Dec. 3, 2003 W	81-74 (A)	17/16		Jan. 4, 1993 W	74-41 (A)	10/10		Jan. 19, 1996 W	78-66 (H)	15/11	
Dec. 8, 2004 W	83-77 (H)			FLORIDA STATE (0-1) <i>(Away: 0-1)</i>		IDAHO (1-0) <i>(Home: 1-0)</i>		Feb. 18, 1996 W	62-54 (A)	18/16	
Nov. 30, 2005 L	83-86 (A)			Nov. 23, 1984 L	60-66 (A)	Feb. 1, 1980 W	81-52 (A)	Jan. 18, 1997 W	68-66 (A)**		
Nov. 29, 2006 W	56-51 (H)			FORDHAM (2-0) <i>(Away: 2-0)</i>		Feb. 29, 1980 W	94-42 (H)	Mar. 1, 1997 W	64-55 (H)		
Dec. 1, 2007 W	82-47 (A)			Jan. 14, 1980 W	77-61 (A)	Jan. 31, 1981 W	94-37 (H)	Mar. 5, 1997 W	56-39 (N)		
Nov. 19, 2008 W	93-63 (H)			Dec. 7, 1998 W	82-54 (A)	Feb. 21, 1981 W	94-61 (A)	Jan. 14, 1998 L	67-76 (H)		
Dec. 11, 2009 L	61-69 (A)			FORT CARSON (1-0) <i>(Home: 1-0)</i>		Jan. 22, 1982 L	55-61 (A)	Feb. 11, 1998 L	43-58 (A)	23/22	
COLORADO WOMEN'S COLLEGE (3-0) <i>(Home: 3-0)</i>						Feb. 13, 1982 W	116-55 (H)	Jan. 13, 1999 L	84-90 (H)	14/15	
Dec. 29, 1979 W	103-52 (H)			Dec. 16, 1980 W	134-33 (H)	20	Nov. 28, 2003 W	95-65 (H)	20/16	16/16	
Nov. 18, 1980 W	107-73 (H)			FORT HAYS STATE (1-0) <i>(Home: 1-0)</i>		Jan. 4, 2009 W	67-55 (A)	Feb. 5, 2000 L	64-82 (A)	8/9	
Dec. 16, 1981 W	89-67 (H)	18		Jan. 5, 1983 W	89-37 (H)			Jan. 27, 2001 L	61-95 (A)	25/RV	
CREIGHTON (1-2) <i>(Home: 0-1, Away: 0-1, Neutral: 0-1)</i>						FRESNO STATE (0-1) <i>(Away: 0-1)</i>		Feb. 14, 2001 W	73-66 (H)	19/21	6/6
Nov. 27, 1987 W	76-60 (N)			Jan. 7, 1987 L	69-70 (A)*			Jan. 23, 2002 W	86-73 (H)	20/19	14/10
Dec. 4, 2004 L	68-84 (H)			GEORGE WASHINGTON (2-0) <i>(Home: 1-0, Neutral: 1-0)</i>		Nov. 20, 2009 W	63-49 (N)	Feb. 9, 2002 L	75-85 (A)	13/13	12/10
Dec. 3, 2005 L	72-77 (A)			Dec. 28, 1987 W	75-58 (H)			Mar. 6, 2002 L	56-58 (N)	10/11	11/10
DARTMOUTH (1-0) <i>(Home: 1-0)</i>						Mar. 23, 1995 W	77-61 (N)	2/2	18/17	24/23	
Dec. 21, 2007 W	57-43 (H)			GEORGIA (0-1) <i>(Neutral: 0-1)</i>		Nov. 26, 1988 W	74-60 (H)	Jan. 25, 2004 W	62-51 (A)	14/14	
DAYTON (1-0) <i>(Home: 1-0)</i>						Nov. 30, 1989 L	60-72 (A)	Feb. 11, 2004 W	72-67 (H)	12/12	
Nov. 25, 1988 W	86-53 (H)			GEORGIA SOUTHERN (1-0) <i>(Home: 1-0)</i>		Dec. 6, 1985 L	66-69 (N)	Jan. 8, 2005 L	64-76 (H)		
DELAWARE (1-0) <i>(Neutral: 1-0)</i>						IOWA (2-1) <i>(Home: 1-0, Away: 0-1, Neutral: 1-0)</i>		Feb. 2, 2005 L	76-103 (A)	19/18	
Dec. 22, 1985 W	84-68 (N)			Nov. 27, 2009 W	62-50 (H)	Jan. 3, 1993 W	72-70 (N)	10/10	4/4	18/19	
DELTA STATE (1-0) <i>(Home: 1-0)</i>						Dec. 10, 2000 L	66-92 (A)	Jan. 10, 2007 W	81-67 (H)		
Jan. 30, 1981 W	83-65 (H)			GONZAGA (3-0) <i>(Home: 2-0, Away 1-0)</i>		Dec. 2, 2001 W	92-83 (H)	11/10		23/RV	
DENVER (4-1) <i>(Home: 3-0, Away: 1-1)</i>						IOWA STATE (36-29) <i>(Home: 18-10, Away: 12-15, Neutral: 6-4)</i>		Jan. 17, 1981 W	72-64 (N)		
Nov. 15, 1977 W	95-72 (A)			Dec. 10, 1989 W	58-41 (A)	Jan. 22, 1977 W	72-71 (H)	Jan. 15, 1982 W	83-74 (N)	13	
Dec. 13, 1978 W	85-50 (H)			Nov. 23, 1990 W	87-59 (H)	Jan. 17, 1981 W	72-64 (N)	Jan. 8, 1982 W	74-48 (N)	15	
Nov. 14, 1998 W	70-58 (H)			Mar. 24, 2008 W	82-68 (H)	Jan. 15, 1982 W	83-74 (N)	Feb. 8, 1984 W	68-65 (H)		
Nov. 19, 1999 L	67-71 (A)			GRAMBLING STATE (1-0) <i>(Home: 1-0)</i>		Mar. 3, 1984 W	72-66 (A)	Mar. 3, 1984 W	72-66 (A)		
Dec. 2, 2009 W	84-57 (H)			Dec. 30, 2009 W	92-43 (H)	Feb. 7, 1985 W	67-66 (H)	Jan. 26, 1985 L	55-66 (H)		
DETROIT MERCY (1-0) <i>(Home: 1-0)</i>						HARTFORD (1-0) <i>(Home: 1-0)</i>		Mar. 2, 1985 L	56-74 (A)		
Nov. 24, 2002 W	86-43 (H)			Nov. 29, 2002 W	69-40 (H)	Jan. 21, 1986 L	61-63 (A)	Jan. 21, 1990 W	73-60 (H)		
DRAKE (0-1) <i>(Home: 0-1)</i>						HARVARD (2-0) <i>(Home 1-0, Neutral 1-0)</i>		Feb. 12, 1986 L	72-74 (H)		
Mar. 14, 1999 L	66-82 (H)			Nov. 22, 2003 W	85-81 (N)	16/16		Jan. 14, 1987 W	72-71 (A)		
DREXEL (1-1) <i>(Home: 0-1, Neutral 1-0)</i>						HAWAII (2-0) <i>(Away: 2-0)</i>		Feb. 14, 1987 L	66-80 (H)		
Dec. 27, 1993 W	70-46 (N)	7/7		Dec. 3, 1988 W	74-72 (A)			Jan. 27, 1988 L	63-72 (A)		
Nov. 29, 2008 L	63-67 (H)			Jan. 4, 2009 W	67-55 (A)			Feb. 10, 1988 W	74-52 (H)		
DUKE (1-0) <i>(Away: 1-0)</i>						HELPING HAND (1-0) <i>(Home: 1-0)</i>		Jan. 18, 1989 W	66-61 (A)	20	
Jan. 5, 1980 W	78-64 (A)			Nov. 11, 1977 W	79-38 (H)			Feb. 4, 1989 W	76-60 (H)	16	
EASTERN ILLINOIS (1-0) <i>(Away: 1-0)</i>						HOLY CROSS (1-1) <i>(Home: 1-0, Neutral: 0-1)</i>		Jan. 21, 1990 W	73-60 (H)		
Mar. 16, 1988 W	78-72 (A)			Dec. 21, 1985 L	76-83 (N)			Feb. 14, 1990 W	69-59 (A)		
EASTERN WASHINGTON (2-0) <i>(Home: 1-0, Neutral: 1-0)</i>						Mar. 3, 1990 L	61-70 (N)	Mar. 3, 1990 L	61-70 (N)		
Nov. 29, 1980 W	97-53 (H)			Nov. 11, 1995 W	83-49 (H)	2/2		Jan. 4, 1991 L	57-67 (A)		
Nov. 19, 1986 W	62-48 (N)							Feb. 17, 1991 W	81-70 (H)		
EVANSVILLE (1-0) <i>(Neutral: 1-0)</i>								Jan. 29, 1992 W	64-48 (A)		
Dec. 7, 2002 W	74-42 (N)							Feb. 8, 1992 W	79-63 (H)		
								Jan. 24, 1993 W	92-52 (A)	4/4	
								Feb. 19, 1993 W	79-29 (H)	4/4	
											9 13/14

ALL-TIME OPPONENT SERIES HISTORY



CU Ranking		Opp. Ranking		CU Ranking		Opp. Ranking		CU Ranking		Opp. Ranking											
Jan. 10, 1993	W	80-71	(H)	7/7	Jan. 27, 1995	W	76-66	(H)	5/5	(Home: 0-1)	Feb. 5, 1986	W	71-62	(A)							
Feb. 5, 1993	W	77-60	(A)	5/5	Feb. 26, 1995	W	74-71	(A)	3/3	Nov. 28, 2008	L	62-70	(H)	Mar. 1, 1986	W	81-70	(H)				
Mar. 7, 1993	L	78-81	(N)**	6/4	Jan. 7, 1996	W	64-58	(A)	13/6	MIAMI (OHIO) (1-0)	Mar. 8, 1986	L	63-75	(N)	Jan. 24, 1987	W	94-91	(A)			
Jan. 9, 1994	L	57-59	(A)	4/4 12/12	Feb. 4, 1996	W	54-50	(H)	16/14	(Home: 1-0)	Feb. 21, 1987	L	66-73	(H)	Feb. 28, 1987	L	77-92	(N)			
Feb. 4, 1994	W	75-67	(H)	7/8 6/6	Jan. 29, 1997	W	71-58	(H)		Nov. 28, 1998	W	82-68	(H)	Feb. 3, 1988	L	69-71	(A)				
Feb. 10, 1995	W	84-73	(H)	3/3 15/15	Feb. 19, 1997	L	62-68	(A)		MICHIGAN (0-2)	Feb. 24, 1988	W	101-88	(H)	Mar. 6, 1988	W	84-80	(N)			
Feb. 24, 1995	W	90-81	(A)*	3/3 24/23	Mar. 8, 1997	W	54-44	(N)		(Home: 0-1, Away: 0-1)	Jan. 25, 1989	W	75-67	(A)	Nov. 21, 1999	L	63-77	(H)			
Mar. 6, 1995	W	61-45	(N)	3/3 23/22	Jan. 21, 1998	L	52-64	(A)		Nov. 21, 1999	L	78-84	(A)	Feb. 8, 1989	W	86-73	(H)				
Jan. 5, 1996	W	60-59	(A)	13/6	Jan. 31, 1998	W	56-52	(H)		MINNESOTA (1-4)	Mar. 5, 1989	W	83-67	(N)	Jan. 24, 1990	L	52-64	(A)			
Feb. 3, 1996	L	57-67	(H)	16/14	Feb. 6, 1999	L	57-59	(H)		(Home: 1-0, Away 0-3, Neutral 0-1)	Jan. 7, 1990	L	55-58	(H)	Feb. 6, 1991	L	64-72	(A)			
Mar. 4, 1996	W	75-47	(N)	19/17 21/22	Feb. 17, 1999	W	57-54	(A)		Dec. 14, 1984	L	61-84	(N)	Jan. 23, 1991	W	74-71	(H)*				
Jan. 25, 1997	L	58-61	(A)	15/15	Mar. 2, 1999	L	51-55	(N)		Dec. 30, 1985	W	76-69	(H)	Feb. 6, 1991	L	64-72	(A)				
Feb. 15, 1997	L	60-72	(H)	15/14	Feb. 16, 2000	L	54-62	(H)		Dec. 30, 1986	L	74-76	(A)*	Jan. 25, 1992	W	69-63	(H)				
Feb. 4, 1998	L	45-65	(H)		Mar. 1, 2000	L	47-64	(A)		Nov. 23, 2003	L	61-95	(A)	Feb. 19, 1992	W	62-57	(A)				
Feb. 18, 1998	L	51-67	(A)		Jan. 6, 2001	W	67-62	(A)		Nov. 22, 2009	L	78-87	(A)	Jan. 16, 1993	W	67-33	(A)				
Jan. 20, 1999	W	76-65	(H)	NR/23	Feb. 24, 2001	W	74-56	(H)	16/20	MISSISSIPPI STATE (1-0)	Feb. 13, 1993	W	75-52	(H)	Feb. 13, 1993	W	75-52	(H)			
Feb. 3, 1999	L	57-65	(A)	22/20	Jan. 9, 2002	L	72-75	(A)	21/19 14/18	(Home: 1-0)	Jan. 16, 1994	W	75-65	(H)	Jan. 16, 1994	W	75-65	(H)			
Jan. 15, 2000	L	56-78	(A)	21/23	Feb. 23, 2002	W	79-58	(H)	11/13 12/12	Dec. 4, 1992	W	95-59	(H)	Feb. 12, 1994	W	62-50	(A)				
Feb. 1, 2000	L	66-74	(H)	NR/24	Jan. 11, 2003	L	36-61	(A)	24/23 4/4	Missouri (40-27)	Mar. 7, 1994	L	71-79	(N)*	Mar. 7, 1994	L	71-79	(N)*			
Jan. 20, 2001	W	72-63	(H)		Mar. 1, 2003	L	59-67	(H)	5/5	(Home: 21-8, Away: 15-15, Neutral: 4-4)	Jan. 14, 1995	W	75-67	(A)	Jan. 14, 1995	W	75-67	(A)			
Feb. 7, 2001	W	70-60	(A)	19/24	Jan. 10, 2004	L	69-76	(H)	14/14 11/12	Jan. 20, 1977	L	56-62	(H)	Feb. 12, 1995	W	79-57	(H)				
Jan. 16, 2002	W	70-35	(A)	22/19	Feb. 8, 2004	L	53-79	(A)	11/10 10/11	Jan. 5, 1978	L	66-68	(N)	Jan. 14, 1996	L	61-72	(A)				
Jan. 29, 2002	W	80-41	(H)	17/17	Jan. 29, 2005	L	70-81	(H)	16/16	Jan. 17, 1983	L	64-90	(A)	Feb. 10, 1996	W	67-56	(H)				
Jan. 18, 2003	W	71-50	(A)		Feb. 19, 2005	L	51-73	(A)	18/17	Feb. 4, 1983	W	83-68	(H)	Jan. 8, 1997	W	78-51	(H)				
Feb. 5, 2003	W	73-42	(H)		Jan. 14, 2006	L	66-85	(A)		Feb. 1, 1984	L	63-105	(A)	Feb. 23, 1997	W	57-50	(A)				
Jan. 13, 2004	W	59-49	(A)	15/15	Feb. 8, 2006	L	62-67	(H)		Feb. 22, 1984	L	63-94	(H)	Feb. 8, 1998	W	71-60	(A)				
Feb. 24, 2004	W	75-56	(H)	14/13	Jan. 31, 2007	W	66-55	(H)		Mar. 6, 1984	L	51-113	(A)	Feb. 25, 1998	W	78-65	(H)				
Jan. 25, 2005	L	60-65	(H)		Feb. 14, 2007	W	60-58	(A)		Feb. 2, 1985	L	71-92	(A)	Jan. 16, 1999	L	60-63	(A)				
Feb. 12, 2005	L	54-76	(A)		Jan. 19, 2008	L	60-67	(A)	25/RV	Feb. 27, 1985	L	65-79	(H)	Feb. 9, 1999	W	74-62	(H)				
Jan. 10, 2006	W	74-65	(H)		Feb. 23, 2008	W	73-68	(H)	15/15	Mar. 3, 1985	L	64-87	(A)	Feb. 12, 2000	L	57-65	(A)				
Feb. 1, 2006	W	77-71	(A)		Feb. 21, 2009	L	60-72	(A)	16/14												
Feb. 6, 2006	L	68-70	(A)*		Mar. 7, 2009	L	61-71	(H)	RV/21												
Feb. 24, 2007	W	59-50	(H)		Mar. 12, 2009	L	51-68	(N)	RV/21												
Jan. 22, 2008	W	59-41	(H)		Jan. 20, 2010	W	63-57	(A)													
Feb. 13, 2008	L	59-70	(A)		Mar. 3, 2010	L	70-72	(H)													
Feb. 4, 2009	L	54-65	(A)																		
Feb. 18, 2009	W	69-62	(H)																		
Jan. 27, 2010	L	64-75	(A)																		
Feb. 16, 2010	L	72-79	(H)																		
KANSAS STATE (33-33)					LONG BEACH STATE (2-2)					MISSISSIPPI STATE (1-0)					MISSOURI (40-27)						
(Home: 16-12, Away: 13-17, Neutral: 4-4)					(Home: 1-0, Away: 1-2)					(Home: 1-0)					(Home: 21-8, Away: 15-15, Neutral: 4-4)						
Dec. 6, 1979	L	75-106	(A)		Jan. 7, 1981	L	55-77	(A)	18	Jan. 20, 1977	L	56-62	(H)	Jan. 5, 1978	L	66-68	(N)	Jan. 20, 1977	L	56-62	(H)
Jan. 19, 1980	L	69-81	(N)	13	Mar. 19, 1988	L	64-103	(A)	7/9	Jan. 5, 1978	L	66-68	(N)	Jan. 17, 1983	L	64-90	(A)	Jan. 5, 1978	L	66-68	(N)
Jan. 16, 1982	L	71-76	(A)	15	Jan. 2, 1994	W	79-55	(A)	5/6	Jan. 17, 1983	L	64-90	(A)	Feb. 4, 1983	W	83-68	(H)	Jan. 17, 1983	L	64-90	(A)
Jan. 15, 1983	L	59-75	(A)	13	Dec. 19, 1994	W	85-42	(H)	8/8	Feb. 4, 1983	W	83-68	(H)	Feb. 1, 1984	L	63-105	(A)	Jan. 17, 1983	L	64-90	(A)
Feb. 19, 1983	W	84-67	(H)	9	LOUISIANA STATE (2-2)					MISSISSIPPI STATE (1-0)					MISSOURI (40-27)						
Mar. 11, 1983	L	63-97	(N)	14	(Home: 1-1, Neutral: 1-1)					(Home: 1-0)					(Home: 21-8, Away: 15-15, Neutral: 4-4)						
Jan. 25, 1984	L	55-77	(H)	7	Dec. 2, 1989	L	60-63	(N)	14/16	Jan. 20, 1977	L	56-62	(H)	Jan. 5, 1978	L	66-68	(N)	Jan. 20, 1977	L	56-62	(H)
Feb. 16, 1984	L	67-94	(A)	9	Dec. 29, 2001	W	86-65	(N)	18/15 21/22	Jan. 5, 1978	L	66-68	(N)	Jan. 17, 1983	L	64-90	(A)	Jan. 5, 1978	L	66-68	(N)
Jan. 19, 1985	L	74-89	(H)		Mar. 17, 2002	W	69-58	(H)	12/12 22/24	Jan. 17, 1983	L	64-90	(A)	Feb. 4, 1983	W	83-68	(H)	Jan. 17, 1983	L	64-90	(A)
Feb. 23, 1985	L	60-75	(A)		Nov. 27, 2004	L	44-75	(H)	2/2	Feb. 4, 1983	W	83-68	(H)	Feb. 1, 1984	L	63-105	(A)	Jan. 17, 1983	L	64-90	(A)
Jan. 18, 1986	L	55-67	(H)		LOUISIANA TECH (1-3)					MISSISSIPPI STATE (1-0)					MISSOURI (40-27)						
Feb. 8, 1986	W	69-57	(A)		(Home: 1-1, Away: 0-2)					(Home: 1-0)					(Home: 21-8, Away: 15-15, Neutral: 4-4)						
Mar. 6, 1986	W	57-56	(N)		Jan. 6, 1988	L	52-66	(A)	3/2	Jan. 20, 1977	L	56-62	(H)	Jan. 5, 1978	L	66-68	(N)	Jan. 20, 1977	L	56-62	(H)
Jan. 21, 1987	L	61-71	(H)		Jan. 3, 1989	W	61-60	(H)	2/2	Jan. 5, 1978	L	66-68	(N)	Jan. 17, 1983	L	64-90	(A)	Jan. 5, 1978	L	66-68	(N)
Feb. 11, 1987	L	78-85	(A)*		Dec. 3, 1994	L	62-77	(A)	10/10 4/4	Jan. 17, 1983	L	64-90	(A)	Feb. 4, 1983	W	83-68	(H)	Jan. 17, 1983	L	64-90	(A)
Jan. 23, 1988	W	84-58	(H)		Nov. 25, 1995	L	61-65	(H)	11/11 1/1	Feb. 4, 1983	W	83-68	(H)	Feb. 1, 1984	L	63-105	(A)	Jan. 17, 1983	L	64-90	(A)
Feb. 17, 1988	W	86-70	(A)		LOYOLA MARYMOUNT (1-1)					MISSISSIPPI STATE (1-0)					MISSOURI (40-27)						
Jan. 14, 1989	W	75-63	(A)		(Home: 0-1, Neutral: 1-0)					(Home: 1-0)					(Home: 21-8, Away: 15-15, Neutral: 4-4)						
Feb. 15, 1989	W	87-71	(H)	15/15	Dec. 30, 1999	L	72-82	(H)		Jan. 20, 1977	L	56-62	(H)	Jan. 5, 1978	L	66-68	(N)	Jan. 20, 1977	L	56-62	(H)
Jan. 13, 1990	L	67-71	(A)		Nov. 19, 2004	W	75-58	(N)		Jan. 5, 1978	L	66-68	(N)	Jan. 17, 1983	L	64-90	(A)	Jan. 5, 1978	L	66-68	(N)
Feb. 11, 1990	W	82-69	(H)		MANHATTAN (1-0)					MISSISSIPPI STATE (1-0)					MISSOURI (40-27)						
Jan. 12, 1991	W	75-74	(H)		(Home: 1-0)					(Home: 1-0)					(Home: 21-8, Away: 15-15, Neutral: 4-4)						
Feb. 13, 1991	W	71-68	(A)		Jan. 2, 2005	W	73-61	(H)		Jan. 20, 1977	L	56-62	(H)	Jan. 5, 1978	L	66-68	(N)	Jan. 20, 1977	L	56-62	(H)
Feb. 5, 1992	W	69-56	(H)		MARSHALL (1-0)					MISSISSIPPI STATE (1-0)					MISSOURI (40-27)						
Feb. 26, 1992	W	65-42	(A)		(Home: 1-0)					(Home: 1-0)					(Home: 21-8, Away: 15-15, Neutral: 4-4)						
Mar. 7, 1992	W	79-27	(N)		Mar. 14, 1997	W	64-49	(H)	18/21	Jan. 20, 1977	L	56-62	(H)	Jan. 5, 1978	L	66-68	(N)	Jan. 20, 1977			



ALL-TIME OPPONENT SERIES HISTORY

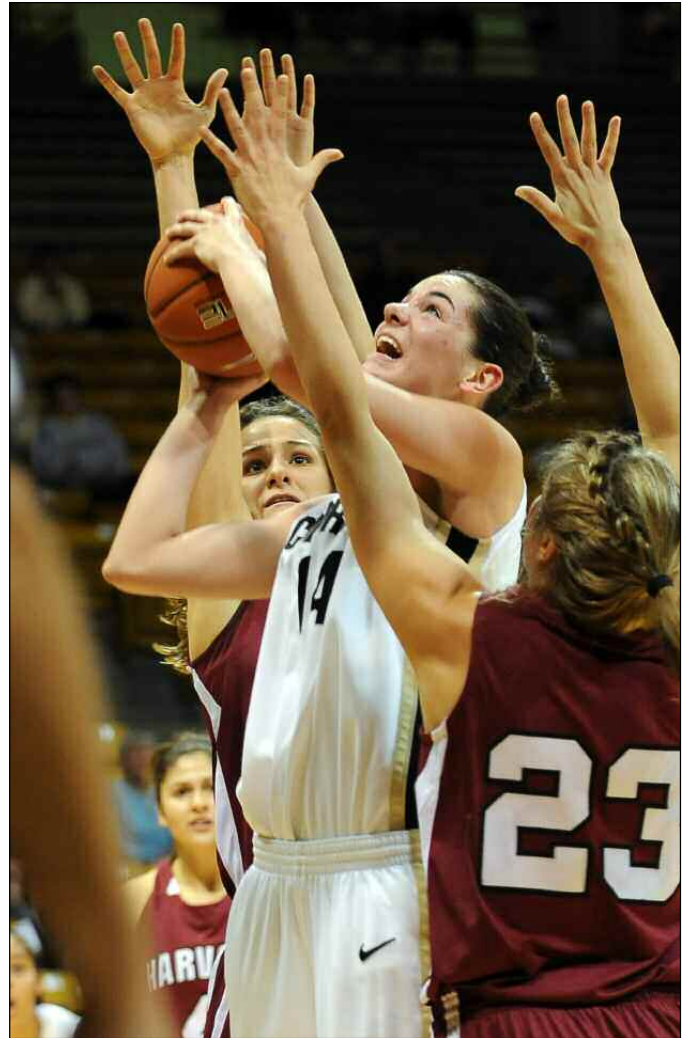
CU Ranking	Opp. Ranking	CU Ranking	Opp. Ranking	CU Ranking	Opp. Ranking	CU Ranking	Opp. Ranking
Feb. 26, 2000 W	72-64 (H)	MISSOURI STATE (2-0) <i>(Home: 2-0)</i>		Jan. 28, 1984 L	77-91 (H)	NEW MEXICO (7-6) <i>(Home: 3-3, Away: 3-3, Neutral: 1-0)</i>	
Mar. 7, 2000 W	83-68 (N)	Jan. 6, 1979 W	95-57 (H)	Feb. 25, 1984 L	67-92 (A)	Jan. 25, 1975 L	38-55 (A)
Jan. 14, 2001 W	98-90 (H)	Mar. 17, 1995 W	78-34 (H) 2/2	Jan. 23, 1985 W	90-83 (A)	Jan. 16, 1976 L	63-66 (H)
Feb. 28, 2001 L	61-78 (A) 17/21	MONTANA (1-2) <i>(Away: 0-1, Neutral: 1-1)</i>		Feb. 13, 1985 L	60-85 (H)	Feb. 26, 1977 L	57-74 (A)
Mar. 7, 2001 W	83-72 (N) 20/21	Dec. 29, 1978 W	78-55 (N)	Feb. 1, 1986 W	80-68 (H)	Nov. 25, 1977 L	64-77 (H)
Jan. 26, 2002 W	78-56 (A) 20/19	Dec. 15, 1984 L	44-61 (A)	Feb. 25, 1986 W	68-66 (A)	Feb. 17, 1978 L	65-72 (H)
Feb. 13, 2002 W	78-47 (H) 13/13	Dec. 7, 1996 L	68-69 (N) 17/13	Mar. 4, 1986 W	96-90 (H)	Feb. 24, 1979 L	73-93 (A)
Feb. 2, 2003 L	52-71 (A)	MONTANA STATE (5-0) <i>(Home: 4-0, Away: 1-0)</i>		Jan. 17, 1987 L	72-74 (A)	Mar. 7, 1979 W	79-77 (N)
Feb. 22, 2003 W	69-48 (H)	Feb. 20, 1980 W	94-72 (H)	Feb. 7, 1987 W	91-71 (H)	Nov. 23, 1983 W	79-66 (A)
Jan. 18, 2004 W	71-54 (H) 15/15	Jan. 4, 1982 W	62-43 (H) 13	Jan. 30, 1988 W	84-69 (H)	Nov. 28, 1984 W	71-69 (H)
Jan. 31, 2004 W	68-66 (A) 11/10	Dec. 21, 1986 W	76-69 (H)	Feb. 20, 1988 L	73-85 (A)*	Dec. 31, 1991 W	92-22 (H)
Jan. 18, 2005 W	56-51 (A)	Dec. 21, 1994 W	74-53 (H) 9/9	Jan. 11, 1989 W	77-53 (H)	Dec. 1, 1992 W	86-37 (A) 25/24
Feb. 9, 2005 L	55-58 (H)	Dec. 22, 1995 W	68-55 (A) 9/6	Feb. 22, 1989 W	71-63 (A) 10	Nov. 15, 1995 W	63-56 (H) 14/11
Jan. 18, 2006 L	49-69 (A)	NEBRASKA (39-28) <i>(Home: 25-6, Away: 11-21, Neutral: 3-1)</i>		Feb. 29, 1989 W	81-57 (H)	Nov. 11, 2001 W	78-63 (A) 12/13
Feb. 18, 2006 L	57-72 (H)	Jan. 31, 1976 L	53-59 (A)	Feb. 3, 1990 W	75-74 (A)	NEW MEXICO STATE (9-2) <i>(Home: 4-0, Away: 5-2)</i>	
Jan. 3, 2007 W	71-59 (H)	Nov. 6, 1976 L	80-81 (A)	Jan. 19, 1991 L	53-68 (A)	Jan. 25, 1975 L	39-48 (A)
Jan. 28, 2007 L	48-61 (A)	Jan. 6, 1978 L	61-63 (A)	Feb. 9, 1991 W	82-69 (H)	Jan. 17, 1976 W	63-58 (H)
Jan. 9, 2008 W	70-58 (A) 23/RV	Nov. 25, 1978 W	63-62 (H)	Jan. 15, 1992 L	69-75 (A)	Feb. 24, 1977 L	64-77 (A)
Mar. 5, 2008 W	63-47 (H)	Dec. 8, 1979 L	62-65 (A)	Feb. 29, 1992 W	83-63 (H)	Feb. 4, 1978 W	58-57 (A)*
Jan. 24, 2009 W	61-56 (A)	Jan. 17, 1980 W	85-70 (N)	Mar. 8, 1992 W	74-66 (N)	Feb. 9, 1979 W	87-67 (H)
Feb. 28, 2009 L	55-66 (H)	Dec. 10, 1981 W	87-66 (H)	Jan. 22, 1993 L	50-62 (A) 4/4	Feb. 7, 1980 W	108-82 (A)
Jan. 9, 2010 W	64-48 (H)	Jan. 22, 1983 W	89-85 (H)	Feb. 21, 1993 W	71-63 (H) 4/4 22/22	Feb. 16, 1980 W	106-75 (A)
Feb. 23, 2010 W	80-79 (A)*	Feb. 12, 1983 L	89-96 (A)	Mar. 6, 1994 W	77-67 (N) 3/3	Jan. 22, 1981 W	95-59 (A)
UMKC (3-0) <i>(Home: 2-0, Away: 1-0)</i>				Jan. 22, 1995 W	73-55 (A) 6/6	Feb. 5, 1981 W	79-41 (H)
Dec. 14, 1988 W	60-49 (A) 20	Jan. 21, 1996 W	69-61 (H) 15/11	Feb. 17, 1995 W	89-76 (H) 3/3	Feb. 4, 1982 W	87-64 (H)
Dec. 6, 1989 W	79-64 (H)	Feb. 14, 1996 L	75-83 (A)**18/16	Jan. 21, 1996 W	69-61 (H) 15/11	Feb. 27, 1982 W	76-65 (A)
Dec. 20, 2008 W	71-49 (H)	Jan. 4, 1997 W	65-58 (A) 25/25	Feb. 14, 1996 L	75-83 (A)**18/16	NEW SOUTH WALES (0-1) <i>(Home: 0-1)</i>	
		Feb. 5, 1997 W	73-52 (H)	Jan. 4, 1997 W	65-58 (A) 25/25	Dec. 10, 1976 L	55-103 (H)
		Jan. 7, 1998 W	84-78 (H) 16/16	Feb. 5, 1997 W	73-52 (H)	NORTH CAROLINA (1-0) <i>(Home: 1-0)</i>	
		Feb. 22, 1998 L	53-78 (A)	Jan. 7, 1998 W	84-78 (H) 16/16	Mar. 24, 2003 W	86-67 (H) 2 12/11
		Jan. 6, 1999 L	49-90 (A)	Feb. 22, 1998 L	53-78 (A)	NORTH CAROLINA STATE (1-0) <i>(Home: 1-0)</i>	
		Jan. 23, 1999 W	70-53 (H) 23/20	Jan. 6, 1999 L	49-90 (A)	Feb. 1, 1997 W	67-62 (H) 21/20
		Jan. 26, 2000 L	66-79 (A)	Jan. 23, 1999 W	70-53 (H) 23/20	NORTH DAKOTA STATE (1-0) <i>(Neutral: 1-0)</i>	
		Feb. 9, 2000 W	78-75 (H)	Jan. 26, 2000 L	66-79 (A)	Dec. 30, 1978 W	87-69 (N)
		Jan. 24, 2001 W	87-69 (H) 25/RV	Feb. 9, 2000 W	78-75 (H)	NORTHERN ARIZONA (13-2) <i>(Home: 7-0, Away: 6-0, Neutral: 0-2)</i>	
		Feb. 10, 2001 W	81-65 (A) 19/24	Jan. 24, 2001 W	87-69 (H) 25/RV	Feb. 13, 1976 W	79-36 (A)
		Feb. 6, 2002 W	95-60 (H) 13/13	Feb. 10, 2001 W	81-65 (A) 19/24	Feb. 4, 1977 W	67-57 (H)
		Feb. 26, 2002 W	84-60 (A) 11/12	Feb. 6, 2002 W	95-60 (H) 13/13	Jan. 21, 1978 W	89-48 (H)
		Jan. 14, 2003 W	74-54 (H)	Feb. 26, 2002 W	84-60 (A) 11/12	Jan. 26, 1979 W	103-69 (A)
		Mar. 5, 2003 W	70-56 (A)	Jan. 14, 2003 W	74-54 (H)	Jan. 21, 1980 W	129-47 (H)
		Feb. 4, 2004 W	78-63 (H) 11/10	Mar. 5, 2003 W	70-56 (A)	Feb. 14, 1980 W	112-76 (A)
		Mar. 3, 2004 W	63-60 (A) 13/13	Feb. 4, 2004 W	78-63 (H) 11/10	Jan. 24, 1981 W	79-47 (A)
		Jan. 5, 2005 L	62-84 (A)	Mar. 3, 2004 W	63-60 (A) 13/13	Feb. 7, 1981 W	81-42 (H)
		Mar. 2, 2005 W	78-76 (H)	Jan. 5, 2005 L	62-84 (A)	Feb. 6, 1982 W	96-48 (H)
		Jan. 4, 2006 L	62-80 (H)	Mar. 2, 2005 W	78-76 (H)	Feb. 25, 1982 W	79-49 (A)
		Jan. 28, 2006 L	54-70 (A)	Jan. 4, 2006 L	62-80 (H)	Nov. 25, 1983 W	62-60 (A)
		Mar. 7, 2006 L	59-67 (N)	Jan. 28, 2006 L	54-70 (A)	Nov. 28, 1986 L	61-63 (N)
		Feb. 10, 2007 L	44-54 (H) 21/21	Mar. 7, 2006 L	59-67 (N)	Dec. 30, 1990 W	79-45 (A)
		Feb. 27, 2007 L	70-90 (A)	Feb. 10, 2007 L	44-54 (H) 21/21	Dec. 18, 1993 W	78-46 (H) 7/7
		Feb. 6, 2008 L	71-80 (H)	Feb. 27, 2007 L	70-90 (A)	Dec. 19, 2005 L	83-84 (N)*
		Mar. 2, 2008 L	55-63 (A)	Feb. 6, 2008 L	71-80 (H)	NORTHERN COLORADO (9-6) <i>(Home: 6-3, Away: 2-3, Neutral: 1-0)</i>	
		Jan. 31, 2009 W	75-73 (H)	Mar. 2, 2008 L	55-63 (A)	Jan. 28, 1975 L	37-68 (H)
		Mar. 3, 2009 L	64-75 (A)	Jan. 31, 2009 W	75-73 (H)	Mar. 1, 1975 L	54-66 (A)
		Jan. 30, 2010 L	64-80 (H)	Mar. 3, 2009 L	64-75 (A)	Jan. 7, 1976 L	59-60 (H)
		Feb. 20, 2010 L	73-89 (A)	Jan. 30, 2010 L	64-80 (H)	Feb. 21, 1976 L	55-81 (A)
		NEVADA (1-1) <i>(Home: 1-0, Away: 0-1)</i>		Feb. 20, 2010 L	73-89 (A)	Jan. 10, 1977 W	58-57 (A)
		Nov. 20, 2004 L	59-69 (A)	NEVADA (1-1) <i>(Home: 1-0, Away: 0-1)</i>		Feb. 12, 1977 L	52-55 (H)
		Nov. 24, 2006 W	80-60 (H)	Nov. 20, 2004 L	59-69 (A)	Nov. 22, 1977 W	62-53 (H)
		UNLV (0-5) <i>(Home: 0-3, Away: 0-2)</i>		Nov. 24, 2006 W	80-60 (H)	Nov. 29, 1977 W	67-56 (N)
		Jan. 9, 1976 L	48-121 (H)	UNLV (0-5) <i>(Home: 0-3, Away: 0-2)</i>		Jan. 27, 1978 L	53-59 (A)
		Jan. 13, 1978 L	36-103 (A)	Jan. 9, 1976 L	48-121 (H)		
		Jan. 12, 1984 L	41-67 (A)	Jan. 13, 1978 L	36-103 (A)		
		Dec. 29, 1984 L	60-77 (H)	Jan. 12, 1984 L	41-67 (A)		
		Mar. 18, 1989 L	74-84 (H)	Dec. 29, 1984 L	60-77 (H)		
				Mar. 18, 1989 L	74-84 (H)		



ALL-TIME OPPONENT SERIES HISTORY



CU Ranking	Opp. Ranking	CU Ranking	Opp. Ranking
Dec. 1, 1978	W 87-68 (A)	Mar. 2, 1996	W 76-60 (N) 20/19
Feb. 1, 1979	W 87-62 (H)	Feb. 12, 1997	W 61-42 (H)
Nov. 26, 1985	W 91-50 (H)	Jan. 28, 1998	L 58-61 (A)
Dec. 29, 2004	W 77-58 (H)	Mar. 3, 1998	W 71-66 (N)
Feb. 13, 2006	W 92-65 (H)	Jan. 9, 1999	W 63-62 (H)
Nov. 28, 2007	W 69-60 (H)	Jan. 22, 2000	L 73-76 (A) 25/NR
NORTHERN ILLINOIS (1-0)			
<i>(Neutral: 1-0)</i>			
Dec. 2, 1994	W 78-49 (N) 10/10	Jan. 3, 2001	L 69-89 (H) 19/16
NORTHERN IOWA (0-1)			
<i>(Home: 0-1)</i>			
Nov. 25, 2005	L 65-74 (H) *	Mar. 8, 2001	L 93-102 (N) 20/21 7/7
NORTHERN STATE (1-0)			
<i>(Neutral: 1-0)</i>			
Dec. 29, 1977	W 99-73 (N)	Jan. 2, 2002	L 67-78 (A) 18/14 3/3
NORTHWESTERN (LA.) STATE (1-0)			
<i>(Neutral: 1-0)</i>			
Dec. 29, 1995	W 71-62 (N) 10/6	Mar. 25, 2002	L 60-94 (N) 12/12 2/2
NOTRE DAME (3-0)			
<i>(Home: 1-0, Neutral: 2-0)</i>			
Dec. 6, 1986	W 76-53 (N)	Feb. 16, 2003	W 61-57 (H)
Dec. 27, 1994	W 91-70 (N) 9/8	Mar. 12, 2003	W 73-68 (N)
Nov. 15, 2003	W 67-63 (H) * 20/20 15/16	Feb. 18, 2004	L 58-78 (A) 13/13 24/22
OAKLAND (1-0)			
<i>(Neutral: 1-0)</i>			
Dec. 30, 2000	W 74-60 (N)	Mar. 10, 2004	L 56-63 (N) 13/13 19/19
OHIO STATE (0-3)			
<i>(Home: 0-1, Away: 0-1, Neutral: 0-1)</i>			
Jan. 2, 1980	L 74-75 (A)	Feb. 16, 2005	L 61-77 (H)
Dec. 5, 1986	L 64-87 (N) 15/14	Jan. 7, 2006	L 61-84 (A) 18/16
Dec. 28, 1988	L 67-72 (H)	Jan. 20, 2007	L 67-82 (H) 7/6
OKLAHOMA (33-22)			
<i>(Home: 16-6, Away: 10-13, Neutral: 7-3)</i>			
Dec. 7, 1978	L 66-68 (A)	Feb. 9, 2008	L 66-82 (A) 10/10
Jan. 19, 1979	W 78-62 (N)	Jan. 21, 2009	L 58-72 (H) 3/2
Dec. 3, 1979	W 90-77 (H)	Feb. 13, 2010	L 55-65 (A) 12/12
Jan. 14, 1982	W 71-61 (N) 15	OKLAHOMA CITY (1-0)	
Jan. 29, 1983	L 79-90 (A)	<i>(Neutral: 1-0)</i>	
Feb. 26, 1983	W 89-82 (H)	Jan. 9, 1982	W 68-41 (N) 13
Mar. 10, 1983	W 78-70 (A)	OKLAHOMA STATE (26-24)	
Jan. 18, 1984	W 66-62 (H)	<i>(Home: 12-10, Away: 8-12, Neutral: 6-2)</i>	
Feb. 18, 1984	L 78-88 (A)	Jan. 21, 1977	W 85-75 (H)
Jan. 29, 1985	L 65-73 (H) 19	Jan. 7, 1978	L 69-75 (N)
Feb. 20, 1985	L 58-80 (A) NR/21	Jan. 20, 1979	L 49-64 (N)
Jan. 15, 1986	W 91-84 (H) 11/12	Jan. 16, 1981	W 80-49 (N)
Feb. 15, 1986	L 69-82 (A) 17/17	Jan. 28, 1983	W 73-55 (A)
Jan. 27, 1987	W 94-80 (H) NR/23	Feb. 5, 1983	W 76-56 (H)
Feb. 18, 1987	W 74-73 (A)	Jan. 21, 1984	L 63-72 (A)
Jan. 13, 1988	L 78-82 (H)	Feb. 11, 1984	L 76-77 (H)
Feb. 27, 1988	W 91-88 (A) * 18/21	Jan. 16, 1985	L 71-76 (A)
Jan. 27, 1989	W 73-70 (A) 15/15	Feb. 16, 1985	L 74-84 (H)
Feb. 18, 1989	W 87-76 (H) 10/12	Jan. 25, 1986	L 68-76 (H)
Mar. 4, 1989	W 80-61 (N)	Feb. 22, 1986	W 68-62 (A)
Jan. 10, 1990	W 56-48 (A)	Jan. 10, 1987	L 81-83 (H)
Feb. 18, 1990	W 86-49 (H)	Feb. 4, 1987	L 78-81 (A)
Jan. 16, 1991	W 68-51 (A)	Jan. 16, 1988	L 63-75 (A)
Feb. 3, 1991	W 76-55 (H)	Feb. 13, 1988	W 78-64 (H)
Mar. 2, 1991	W 80-75 (N)	Mar. 3, 1988	W 79-68 (N)
Feb. 1, 1992	W 63-55 (A)	Feb. 1, 1989	W 85-58 (H) 16/18
Feb. 22, 1992	W 86-63 (H)	Feb. 11, 1989	W 76-59 (A) 15/15
Jan. 29, 1993	W 80-49 (H) 7/7	Mar. 6, 1989	W 98-92 (N) ** 9/12
Feb. 28, 1993	L 69-74 (A) 4/4	Jan. 28, 1990	L 55-63 (A)
Jan. 28, 1994	W 79-74 (A) 3/4	Feb. 25, 1990	W 84-65 (H)
Feb. 27, 1994	W 89-79 (H) 3/3	Jan. 30, 1991	L 72-90 (A)
Jan. 8, 1995	W 83-59 (H) 7/6	Feb. 23, 1991	W 65-63 (H) 25/24
Feb. 3, 1995	W 69-64 (A) 4/4 25/NR	Jan. 22, 1992	L 70-82 (H)
Jan. 28, 1996	W 68-53 (A) 16/11	Feb. 15, 1992	L 61-54 (A)
Feb. 23, 1996	W 83-68 (H) 20/18	Jan. 31, 1993	W 78-76 (H) 7/7 21/19
		Feb. 26, 1993	W 49-48 (N) 4/4
		Jan. 30, 1994	L 73-75 (A) * 3/4
		Feb. 25, 1994	W 69-59 (H) 3/3
		Jan. 6, 1995	W 71-52 (H) 7/6
		Feb. 5, 1995	W 69-52 (A) 4/4
		Mar. 5, 1995	W 76-58 (N) 3/3
		Jan. 26, 1996	L 46-50 (A) 16/11 24/22
		Feb. 25, 1996	L 49-69 (H) 20/18
		Mar. 3, 1996	W 69-59 (N) 20/19
		Jan. 15, 1997	L 60-68 (A)
		Feb. 14, 1998	L 67-72 (H)
		Jan. 28, 1999	W 62-58 (A)
		Jan. 29, 2000	L 72-75 (H)
		Jan. 10, 2001	W 65-49 (A)
		Jan. 12, 2002	W 79-57 (H) 21/19
		Jan. 22, 2003	W 64-50 (A)
		Feb. 21, 2004	W 72-57 (H) 13/13
		Jan. 22, 2005	L 70-76 (A) *
		Feb. 26, 2006	W 73-62 (H)



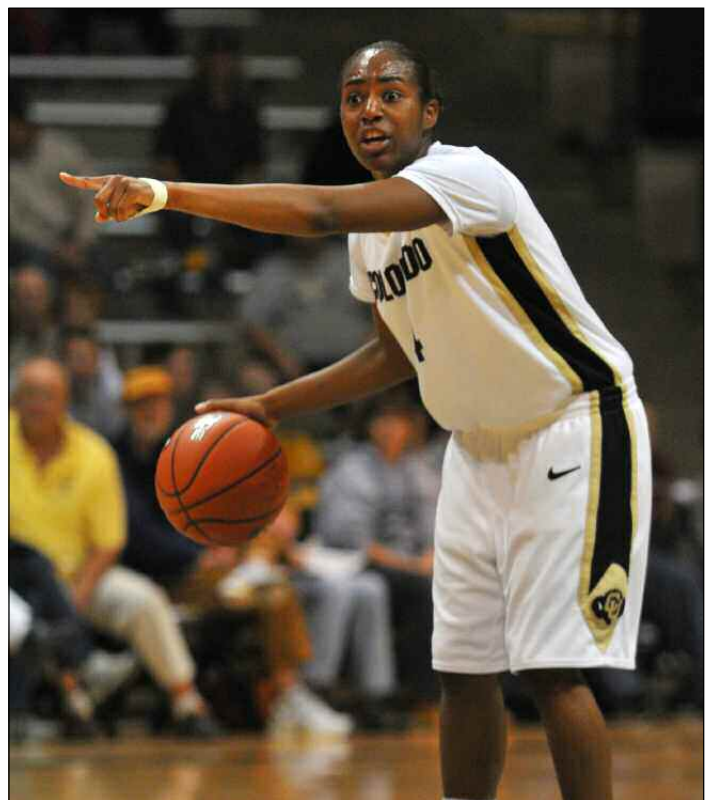
Jan. 24, 2007	L 58-61 (A)		
Feb. 2, 2008	L 72-81 (H)	21/18	
Jan. 14, 2009	L 43-79 (A)	22/22	
Jan. 24, 2010	L 63-74 (H)	12/17	
OLD DOMINION (1-1)			
<i>(Home: 1-0, Neutral: 0-1)</i>			
Dec. 30, 1995	L 65-77 (N)	10/6	19/20
Nov. 14, 2003	W 84-67 (H)	20/20	
ORAL ROBERTS (1-0)			
<i>(Home: 1-0)</i>			
Nov 9, 2001	W 78-49 (H)	12/13	
OREGON (3-8)			
<i>(Home: 1-3, Away: 0-3, Neutral: 2-2)</i>			
Mar. 18, 1981	L 67-74 (A)	17	14
Dec. 5, 1981	W 69-68 (N)		13
Dec. 19, 1982	L 58-73 (N)		
Dec. 3, 1983	L 71-82 (H)		
Dec. 28, 1986	L 75-81 (A)		
Dec. 2, 1988	W 62-51 (N)		
Mar. 19, 1994	W 92-71 (H)	2/3	
Nov. 24, 1998	L 63-75 (H)		
Dec. 4, 1999	L 58-90 (A)	16/13	
Dec. 30, 2005	L 64-72 (H)		
Dec. 9, 2006	L 60-70 (N)		
OREGON STATE (2-0)			
<i>(Home: 2-0)</i>			
Dec. 7, 1987	W 82-60 (H)		
Dec. 19, 1999	W 68-60 (H)		

PACIFIC (2-0)			
<i>(Home: 1-0, Away: 1-0)</i>			
Dec. 18, 2004	W 45-42 (A)		
Dec. 8, 2005	W 84-57 (H)		
PACIFIC CHRISTIAN (1-0)			
<i>(Home: 1-0)</i>			
Nov. 18, 1981	W 108-43 (H)		
PENN (2-0)			
<i>(Home: 2-0)</i>			
Jan. 3, 1987	W 84-38 (H)		
Nov. 26, 2004	W 69-49 (H)		
PENN STATE (0-2)			
<i>(Away: 0-1, Neutral: 0-1)</i>			
Jan. 12, 1980	L 72-75 (A)		
Dec. 2, 1995	L 57-76 (N)	8/8	12/12
PEPPERDINE (3-0)			
<i>(Home: 1-0, Away: 1-0; Neutral 1-0)</i>			
Jan. 6, 1981	W 71-67 (A)	18	
Jan. 4, 2008	W 65-53 (H)	23/RV	
Jan. 3, 2009	W 63-55 (N)		
PERU STATE (1-0)			
<i>(Neutral: 1-0)</i>			
Dec. 28, 1977	W 88-35 (N)		
PHILLIPS (0-1)			
<i>(Neutral: 0-1)</i>			
Dec. 4, 1977	L 73-76 (N)		

ALL-TIME OPPONENT SERIES HISTORY



CU Ranking	Opp. Ranking	CU Ranking	Opp. Ranking	CU Ranking	Opp. Ranking	CU Ranking	Opp. Ranking
TEXAS CHRISTIAN (3-0) (Home: 2-0, Away: 1-0)		Mar. 1, 1980 W 109-89 (H)		Dec. 4, 1982 W 89-77 (H)		Dec. 20, 1978 W 83-66 (A)	
Dec. 7, 1993 W 101-56 (A) 9/10		Jan. 28, 1981 W 103-40 (H)		Dec. 19, 1983 L 79-81 (A)		Jan. 15, 1979 W 84-60 (H)	
Nov. 28, 1995 W 96-48 (H) 8/8		Feb. 20, 1981 W 91-76 (A)		Nov. 26, 1993 W 84-53 (H) 12/13		Dec. 1, 1979 W 90-82 (H)	
Mar. 30, 2008 W 96-90 (H) *		Jan. 21, 1982 W 83-74 (A) * 16		WESTERN ILLINOIS (1-0) (Home: 1-0)		Nov. 26, 1980 W 86-59 (H)	
UTEP (5-0) (Home: 3-0, Away: 2-0)		Feb. 10, 1982 W 70-53 (H)		Nov. 24, 1989 W 78-59 (H)		Feb. 23, 1981 W 90-64 (A)	
Feb. 6, 1976 W 67-39 (H)		Nov. 26, 1982 W 61-46 (H)		WESTERN KENTUCKY (1-0) (Neutral: 1-0)		Nov. 30, 1981 W 82-66 (A)	
Feb. 25, 1977 W 71-68 (A)		Jan. 11, 1983 W 92-57 (H)		Dec. 27, 1991 W 71-68 (N) * 11/12		Feb. 17, 1982 W 69-47 (H)	
Feb. 3, 1978 W 58-50 (A)		Jan. 6, 1986 W 86-63 (A)		WESTERN MICHIGAN (1-0) (Home: 1-0)		Jan. 8, 1983 W 67-63 (A)	
Feb. 10, 1979 W 109-42 (H)		Dec. 13, 1986 W 100-27 (H)		Nov. 27, 1999 W 79-62 (H)		Jan. 24, 1983 W 78-52 (H)	
Nov. 19, 1982 W 76-45 (H)		Nov. 26, 2005 W 73-56 (H)		WICHITA STATE (2-0) (Home: 1-0, Away: 1-0)		Dec. 1, 1983 W 57-56 (A)	
TEXAS SOUTHERN (1-0) (Home: 1-0)		VANDERBILT (1-4) (Home: 0-2, Away: 1-2)		Nov. 27, 1990 W 89-52 (A)		Jan. 5, 1984 W 73-55 (H)	
Dec. 14, 2007 W 64-29 (H)		Nov. 30, 1991 L 69-79 (H) 6/9		Nov. 22, 1991 W 82-55 (H)		Dec. 10, 1984 W 92-58 (H)	
TEXAS TECH (5-16) (Home: 2-6, Away: 1-7, Neutral: 2-3)		Mar. 19, 2001 L 59-65 (A) 20/21 10/11		WINNIPEG (1-0) (Home: 1-0)		Dec. 3, 1985 W 65-60 (A)	
Dec. 5, 1980 W 67-56 (N)		Nov. 15, 2001 L 51-72 (A) 12/12 3/3		Dec. 8, 1980 W 86-39 (H)		Dec. 2, 1986 W 80-57 (H)	
Dec. 1, 1984 L 56-79 (H)		Nov. 12, 2006 L 76-81 (H) 16/15		WISCONSIN (0-1) (Neutral: 0-1)		Dec. 1, 1987 W 76-60 (A)	
Nov. 29, 1985 L 58-69 (A)		Dec. 9, 2007 W 62-51 (A) 20/17		Mar. 21, 1982 L 59-60 (N)		Dec. 6, 1988 W 82-57 (H) 20/25	
Mar. 27, 1993 L 54-79 (N) 9/9 5/6		VERMONT (1-0) (Home: 1-0)		WRIGHT STATE (1-0) (Home: 1-0)		Dec. 13, 1989 L 63-67 (A)	
Jan. 11, 1997 W 63-49 (H) 7/7		Nov. 24, 1995 W 73-68 (H) 11/11		Nov. 26, 1999 W 76-49 (H)		Dec. 12, 1990 W 76-46 (H)	
Jan. 17, 1998 L 40-80 (A) 5/6		VILLANOVA (1-3) (Home: 1-1, Away: 0-1, Neutral: 0-1)		WYOMING (33-9) (Home: 20-2, Away: 13-7)		Dec. 11, 1991 W 68-66 (A)	
Mar. 4, 1998 L 49-80 (N) 5/5		Jan. 10, 1980 L 58-61 (A)		Feb. 28, 1975 L 45-60 (A)		Dec. 29, 1992 W 72-56 (H) 10/10	
Feb. 24, 1999 L 71-83 (H) 11/7		Nov. 30, 2002 L 54-59 (H)		Dec. 4, 1975 L 57-59 (A)		Dec. 7, 1994 W 78-59 (A) 10/8	
Jan. 12, 2000 L 50-75 (A) 15/14		Mar. 29, 2003 L 51-53 (N) 11/12		Feb. 20, 1976 L 45-52 (H)		Dec. 7, 1995 W 70-48 (H) 8/6	
Mar. 8, 2000 L 60-76 (N) 7/7		Mar. 27, 2008 W 64-58 (H)		Nov. 19, 1976 W 57-56 (H)		Dec. 4, 1996 W 58-44 (A) 17/13	
Feb. 21, 2001 L 61-68 (H) 16/20 15/13		VIRGINIA (0-3) (Home: 0-1, Away: 0-2)		Jan. 7, 1977 W 61-41 (H)		Dec. 10, 1997 W 79-57 (H) 21/21	
Feb. 3, 2002 W 74-69 (A) * 17/17 13/16		Jan. 7, 1980 L 63-65 (A)		Dec. 12, 2001 W 81-57 (H) 13/12		Dec. 9, 1998 W 70-50 (A)	
Jan. 26, 2003 L 58-80 (H) 7/7		Nov. 24, 2008 L 43-77 (A) 16/15		Dec. 4, 2002 W 73-62 (A)		Dec. 8, 1999 W 78-59 (H)	
Feb. 28, 2004 L 51-60 (A) 14/13 8/9		Jan. 2, 2010 L 59-74 (H) 23/21		Dec. 28, 2003 W 71-39 (H) 13/13		Nov. 29, 2000 W 78-70 (A)	
Jan. 15, 2005 L 41-87 (H) 13/13		WASHINGTON (6-2) (Home: 3-1, Away: 2-1, Neutral: 1-0)		Dec. 1, 2004 W 76-74 (A) *		Dec. 12, 2001 W 81-57 (H) 13/12	
Feb. 11, 2006 L 56-76 (A)		Dec. 21, 1982 W 67-65 (H) 15		WASHINGTON STATE (1-1) (Home: 1-0, Away: 0-1)		Dec. 4, 2002 W 73-62 (A)	
Feb. 3, 2007 W 70-67 (H)		Nov. 24, 1990 L 60-87 (H) 14/15		Jan. 8, 1985 W 84-70 (H)		Dec. 28, 2003 W 71-39 (H) 13/13	
Mar. 6, 2007 W 71-67 (N)		Dec. 28, 1991 L 53-58 (A) 15/15		Dec. 5, 1998 L 76-81 (A)		Dec. 1, 2004 L 67-72 (A)	
Jan. 26, 2008 L 44-62 (A)		Nov. 27, 1993 W 76-65 (H) 12/13		WAYLAND BAPTIST (0-2) (Home: 0-1, Away: 0-1)		Nov. 21, 2005 L 50-66 (H)	
Jan. 28, 2009 L 60-66 (H)		Dec. 28, 1994 W 55-51 (A) 9/8 13/11		Jan. 25, 1980 L 68-76 (H)		Nov. 21, 2006 L 49-68 (A)	
Jan. 12, 2010 L 74-61 (A)		Dec. 1, 1995 W 64-53 (N) 8/8		Nov. 14, 1981 L 56-70 (A)		Dec. 5, 2007 W 69-55 (H) 21/22	
TULANE (1-1) (Home: 1-0, Neutral: 0-1)		Dec. 9, 2003 W 78-64 (H) 17/14		WAYNE STATE (1-0) (Neutral: 1-0)		YALE (1-0) (Home: 1-0)	
Mar. 15, 1996 W 83-75 (H) 19/17		Dec. 21, 2004 W 76-74 (A) *		Dec. 30, 1977 W 57-47 (N)		Jan. 4, 2009 W 78-71 (H)	
Dec. 6, 1997 L 62-63 (N) 16/17 22/22		WASHINGTON STATE (1-1) (Home: 1-0, Away: 0-1)		WEBER STATE (10-7) (Home: 8-2, Away: 1-4, Neutral: 1-1)		Key: *OT; **2OT	
UTAH (6-10) (Home: 4-2, Away: 0-7, Neutral: 2-1)		Jan. 8, 1985 W 84-70 (H)		Jan. 17, 1975 W 57-54 (H)			
Feb. 14, 1975 L 48-68 (A)		Dec. 5, 1998 L 76-81 (A)		Feb. 27, 1976 L 64-66 (H)			
Feb. 5, 1976 L 55-61 (H)		WAYNE STATE (1-0) (Neutral: 1-0)		Feb. 18, 1977 L 71-77 (H)			
Jan. 28, 1977 L 39-62 (A)		Dec. 30, 1977 W 57-47 (N)		Feb. 10, 1978 L 75-89 (A)			
Feb. 25, 1978 L 70-81 (H)		WEBER STATE (10-7) (Home: 8-2, Away: 1-4, Neutral: 1-1)		Dec. 28, 1978 L 77-92 (N)			
Mar. 1, 1979 L 83-97 (A)		Jan. 17, 1975 W 57-54 (H)		Feb. 17, 1979 W 99-93 (H)			
Mar. 9, 1979 L 79-82 (N)		Feb. 27, 1976 L 64-66 (H)		Mar. 10, 1979 W 92-87 (N)			
Dec. 10, 1980 W 83-49 (H)		Feb. 18, 1977 L 71-77 (H)		Feb. 9, 1980 L 86-89 (A)			
Feb. 13, 1981 L 75-84 (A)		Feb. 10, 1978 L 75-89 (A)		Feb. 23, 1980 W 103-72 (H)			
Mar. 7, 1981 W 75-61 (N)		Dec. 28, 1978 L 77-92 (N)		Feb. 14, 1981 W 81-75 (A)			
Nov. 28, 1981 W 77-63 (H)		Feb. 17, 1979 W 99-93 (H)		Feb. 25, 1981 W 93-59 (H)			
Jan. 23, 1982 L 62-65 (A) 16		Mar. 10, 1979 W 92-87 (N)		Jan. 30, 1982 W 86-77 (H)			
Dec. 5, 1983 L 60-88 (A)		Feb. 9, 1980 L 86-89 (A)		Feb. 19, 1982 L 78-80 (A)			
Jan. 7, 1989 W 79-61 (H)		Feb. 23, 1980 W 103-72 (H)		Mar. 14, 1982 W 71-64 (H)			
Dec. 7, 1991 W 69-45 (N)		Feb. 14, 1981 W 81-75 (A)					
Jan. 4, 1990 L 46-58 (A)		Feb. 25, 1981 W 93-59 (H)					
Nov. 17, 1995 W 63-61 (H) 14/11		Jan. 30, 1982 W 86-77 (H)					
UTAH STATE (12-5) (Home: 8-3, Away: 4-2)		Feb. 19, 1982 L 62-65 (A)					
Jan. 18, 1975 L 44-50 (H)		Dec. 5, 1983 L 60-88 (A)					
Feb. 28, 1976 L 53-71 (H)		Jan. 7, 1989 W 79-61 (H)					
Feb. 19, 1977 L 71-92 (H)		Dec. 7, 1991 W 69-45 (N)					
Feb. 11, 1978 L 67-81 (A)		Jan. 4, 1990 L 46-58 (A)					
Dec. 11, 1978 L 81-88 (A)		Nov. 17, 1995 W 63-61 (H) 14/11					
Feb. 16, 1979 W 101-96 (H)							
Feb. 2, 1980 W 107-90 (A)							





ALL-TIME SERIES STANDINGS

School	Colorado				Date	School	Colorado				Date	School	Colorado				Date
	Won	Lost	Last Meeting				Won	Lost	Last Meeting				Won	Lost	Last Meeting		
Adams State	2	0	W 106-54		11-23-85	Fresno State	0	1	L 69-70*		1-7-87	Northwestern (La.) St....	1	0	W 71-62		12-29-95
Air Force	3	0	W 80-47		12-5-01	George Washington	2	0	W 77-61		3-23-95	Notre Dame	3	0	W 67-63*		11-15-03
Albany	1	0	W 93-43		11-17-00	Georgia	0	1	L 79-82		3-25-95	Oakland.....	1	0	W 74-60		12-30-00
Alcorn State	1	0	W 62-45		12-8-96	Georgia Southern.....	1	0	W 62-50		11-27-09	Ohio State.....	0	3	L 67-72		12-28-88
American.....	1	0	W 90-70		12-4-98	Georgia Tech.....	0	1	L 56-76		11-21-84	Oklahoma City.....	1	0	W 68-41		1-9-82
Arizona	6	3	W 75-69*		11-24-91	Gonzaga	3	0	W 82-68		3-24-08	Old Dominion.....	1	1	W 84-67		11-14-03
Arizona State.....	9	0	W 103-63		12-9-87	Grambling State	1	0	W 92-43		12-30-09	Oral Roberts.....	1	0	W 78-49		11-9-01
Arkansas	2	1	W 73-71		11-21-95	Hartford	1	0	W 69-40		11-29-02	Oregon	3	8	L 60-70		12-9-06
Arkansas-Pine Bluff.....	1	0	W 73-39		12-2-08	Harvard	2	0	W 67-65		11-28-09	Oregon State.....	2	0	W 68-60		12-19-99
Auburn.....	0	1	L 68-61		3-17-96	Hawaii	2	0	W 67-55		1-4-09	Pacific	2	0	W 84-57		12-8-05
Boston University.....	1	0	W 94-56		12-1-90	Helping Hand.....	1	0	W 79-83		11-11-77	Pacific Christian	1	0	W 108-43		11-18-81
Bowling Green.....	2	0	W 96-44		11-23-01	Holy Cross	1	1	W 83-49		3-16-95	Penn.....	2	0	W 69-49		11-26-04
Brigham Young.....	8	7	W 84-45		3-22-03	Houston	1	1	W 88-58		11-24-01	Penn State	0	2	L 57-76		12-2-95
Buffalo.....	2	0	W 98-47		1-3-04	Howard	1	0	W 96-45		11-24-00	Pepperdine	3	0	W 63-55		1-3-09
Butler.....	1	0	W 86-57		11-25-00	Idaho.....	1	0	W 77-66		12-27-98	Peru State	1	0	W 88-35		12-28-77
California	4	0	W 74-63		11-29-03	Idaho State	7	1	W 73-57		12-30-08	Phillips	0	1	L 73-76		12-4-77
UCLA	2	2	W 79-48		12-8-01	Illinois.....	2	1	W 78-70		12-28-99	Portland State.....	0	1	L 55-57		12-20-83
UC-Irvine.....	3	0	W 61-56		11-15-09	Illinois-Chicago	1	0	W 63-49		11-20-09	Providence.....	1	1	L 90-91		12-2-90
UC Riverside	1	0	W 63-50		12-29-00	Illinois State.....	1	1	L 60-72		11-30-89	Puerto Rico-Mayaguez ...	1	0	W 90-42		12-20-05
UC Santa Barbara.....	1	3	L 49-76		3-20-04	Indiana	0	1	L 66-69		12-6-85	Purdue	2	0	W 79-64		12-3-95
Cal Poly-Pomona.....	0	1	L 68-74		12-18-87	Iowa.....	2	1	W 92-83		12-2-01	Redlands	1	0	W 107-49		1-14-78
Cal State Bakersfield.....	1	0	W 76-61		12-28-06	Jacksonville State.....	1	0	W 64-29		12-14-07	Rice.....	3	0	W 72-55		11-24-07
Cal State-Fullerton.....	4	1	L 77-89		12-7-06	Long Beach State	2	2	W 85-42		12-19-94	Rutgers	1	0	W 79-47		12-28-93
Cal State Northridge.....	1	0	W 80-64		11-19-06	Louisiana State	2	2	L 44-75		11-27-04	Saint Francis (Ind.).....	1	0	W 94-54		1-3-81
UCF	1	0	W 86-59		11-16-08	Louisiana Tech	1	3	L 61-65		11-25-95	Saint Francis (Pa.)	1	0	W 114-52		11-28-94
Central Michigan.....	2	0	W 71-49		11-29-97	Loyola Marymount	1	1	W 75-58		11-19-04	Saint John's.....	1	0	W 79-62		11-28-87
Charleston	1	0	W 81-66		12-20-85	Manhattan	1	0	W 73-61		1-2-05	Saint Joseph's.....	1	0	W 77-67		1-9-80
Charlotte.....	1	0	W 78-65		11-25-06	Marshall	1	0	W 69-49		3-13-97	Saint Louis	1	0	W 76-63		12-22-08
Colorado College.....	2	0	W 83-58		2-15-83	Marquette.....	1	1	L 72-86		4-2-08	Saint Mary's.....	3	0	W 79-76*		12-3-77
Colorado State	30	11	L 61-69		12-11-09	Massachusetts.....	0	1	L 62-70		11-28-08	Sam Houston State	1	0	W 99-60		12-24-00
Colo. Women's College...	3	0	W 89-67		12-16-81	Miami (Ohio)	1	0	W 82-68		11-28-98	San Diego.....	3	0	W 83-44		11-20-01
Creighton	1	2	L 72-77		12-3-05	Michigan	0	2	L 77-63		11-21-99	San Diego State.....	1	1	W 70-51		11-26-94
Dartmouth.....	1	0	W 57-43		12-21-07	Minnesota	1	4	L 78-87		11-22-09	San Francisco.....	3	2	W 66-48		11-16-07
Dayton	1	0	W 86-53		11-25-88	Mississippi State	1	0	W 95-59		12-4-92	San Jose State	1	0	W 86-50		12-22-09
Delaware	1	0	W 84-68		12-22-85	UMKC.....	3	0	W 71-49		12-20-08	Santa Clara	1	0	W 60-49		12-19-87
Delta State	1	0	W 83-65		1-30-81	Missouri State.....	2	0	W 78-34		3-18-95	Seton Hall	1	1	W 80-54		12-6-09
Denver	4	1	W 84-57		12-2-09	Montana.....	1	2	L 68-69		12-7-96	Siena	1	1	L 73-84		11-23-07
Detroit Mercy	1	0	W 86-43		11-24-02	Montana State.....	5	0	W 68-65		12-22-95	Simpson	1	0	W 73-68		11-27-76
Drake.....	0	1	L 66-82		3-14-99	Nevada.....	1	1	W 80-60		11-24-06	South Dakota State.....	1	1	L 58-80		12-13-06
Drexel.....	30	10	W 93-63		11-19-08	UNLV	0	5	L 74-84		3-18-89	South Florida	0	1	L 59-72		12-21-05
Duke.....	1	0	W 78-64		1-5-80	New Mexico	7	6	W 78-63		11-11-01	Southern	1	0	W 88-61		3-15-02
Eastern Illinois.....	1	0	W 78-72		3-16-88	New Mexico State	9	2	W 76-65		2-27-82	Southern California	2	2	L 57-70		11-18-07
Eastern Washington	2	0	W 52-48		11-19-86	New South Wales	0	1	L 55-103		12-10-76	Southern Illinois	3	1	W 79-51		12-20-98
Evansville	1	0	W 74-42		12-7-03	North Carolina.....	1	0	W 86-67		3-24-03	SMU	1	0	W 74-56		11-30-96
Flatorns.....	1	0	W 49-41		11-18-75	North Carolina State.....	1	0	W 67-72		2-1-97	Southern Utah.....	2	0	W 88-36		12-19-09
Florida	1	1	L 50-61		12-27-01	North Dakota State.....	1	0	W 87-69		12-30-78	Southwest Louisiana	1	0	W 73-50		12-5-93
Florida International.....	1	0	W 74-71		1-4-93	Northern Arizona	13	2	L 83-84*		12-19-05	Sportsmen of Iowa.....	1	0	W 73-58		11-26-76
Florida State	0	1	L 60-66		11-23-84	Northern Colorado.....	9	6	W 69-60		11-28-07	Stanford.....	4	5	W 62-59		3-23-02
Fordham.....	2	0	W 82-54		12-7-98	Northern Illinois.....	1	0	W 78-49		12-2-94	Stephen F. Austin	3	0	W 66-57		3-15-97
Fort Carson.....	1	0	W 134-33		12-16-80	Northern Iowa.....	0	1	L 65-74*		11-25-05	Syracuse.....	2	1	W 80-45		12-30-03
Fort Hays State	1	0	W 89-37		1-5-83	Northern State	1	0	W 99-73		12-29-77	Temple.....	1	0	W 64-35		1-2-93

ALL-TIME SERIES STANDINGS

School	Colorado		Last Meeting	Date
	Won	Lost		
Temple Junior College ...	0	1	L 71-76	11-20-76
Tennessee.....	1	3	L 67-75	3-22-97
Texas Christian	3	0	W 96-90*	3-30-08
UTEP.....	5	0	W 76-45	11-19-82
Texas Southern.....	1	0	W 64-29	12-14-07
Texas State	1	1	W 78-57	12-19-92
Tulane.....	1	1	L 62-63	12-6-97
Utah.....	6	10	W 63-61	11-17-95
Utah State.....	12	5	W 73-56	11-26-05
Vanderbilt.....	1	4	W 62-51	12-9-07
Vermont	1	0	W 73-68	11-24-95
Villanova	1	3	W 64-58	3-27-08
Virginia.....	0	3	L 59-74	1-2-10
Washington	6	2	W 76-74*	12-21-04
Washington State	1	1	L 76-81	12-5-98
Wayland Baptist	0	2	L 56-70	11-14-81
Wayne State.....	1	0	W 57-47	11-30-77
Weber State	10	7	W 84-53	11-26-93
Western Illinois.....	1	0	W 78-59	11-24-89
Western Kentucky	1	0	W 71-68*	12-27-91
Western Michigan	1	0	W 79-62	11-27-99
Wichita State.....	2	0	W 89-52	11-22-91
Winnipeg.....	1	0	W 86-39	12-8-80
Wisconsin.....	0	1	L 59-60	3-21-82
Wright State	1	0	W 76-49	11-26-99
Wyoming	33	9	W 69-55	12-5-08
Yale.....	1	0	W 78-71	1-4-10
Total Non-Conference ..	384	175	(.687)	

Big 12 Opponents	Won	Lost	Last Meeting	Date
Baylor	8	11	L 65-72	3-11-10
Iowa State	36	29	L 41-59	3-6-10
Kansas	33	32	L 72-79	2-16-10
Kansas State.....	33	33	L 70-72	3-3-10
Missouri	40	27	W 80-79	OT2-23-10
Nebraska	39	28	L 79-89	2-20-10
Oklahoma	33	22	L 55-65	2-13-10
Oklahoma State	26	24	L 63-74	11-24-10
Texas.....	4	15	L 50-74	2-10-10
Texas A&M	10	8	L 61-95	2-27-10
Texas Tech	5	16	L 74-61	1-12-10
Total Conference	267	245	(.521)	
Total Overall	651	420	(.608)	

*overtime game 2010-11 opponents in **boldface**.



ALL-TIME CONFERENCE RECORDS

AMERICA EAST

Albany	1-0
Boston	1-0
Vermont	1-0
Total	(100%) 3-0

ATLANTIC COAST

Duke	1-0
Florida State	0-1
Georgia Tech	0-1
North Carolina	1-0
North Carolina State	1-0
Virginia	0-3
Total	(37.5%) 3-5

ATLANTIC 10

Charlotte	1-0
Dayton	1-0
Fordham	2-0
George Washington	2-0
Massachusetts	0-1
Saint Louis	1-0
Saint Joseph's	1-0
Temple	1-0
Total	(90%) 9-1

BIG EAST

Marquette	1-1
Notre Dame	3-0
Providence	1-1
Rutgers	1-0
Saint John's	1-0
Seton Hall	1-1
South Florida	0-1
Syracuse	2-1
Villanova	1-4
Total	(55.0%) 11-9

BIG SKY

Eastern Washington	2-0
Idaho State	7-1
Montana	1-2
Montana State	5-0
Northern Arizona	13-2
Northern Colorado^	9-6
Portland State	0-1
Weber State	10-7
Total	(71.2%) 47-19

BIG 10

Illinois	2-1
Indiana	0-1
Iowa	2-1
Michigan	0-2
Minnesota	1-4
Ohio State	0-3
Penn State	0-2
Wisconsin	0-1
Total	(25.0%) 5-15

BIG 12

Baylor	8-11
Iowa State	36-29
Kansas	33-32
Kansas State	33-33
Missouri	40-27
Nebraska	39-28
Oklahoma	33-22
Oklahoma State	26-24
Texas	4-15
Texas A&M	10-8
Texas Tech	5-16
Total	(52.1%) 267-245

BIG WEST

UC-Irvine	3-0
UC-Santa Barbara	1-3
UC-Riverside	1-0
Cal State-Fullerton	4-1
Cal State Northridge	1-0
Long Beach State	2-2
Pacific	2-0
Total	(70.0%) 14-6

COLONIAL ATHLETIC ASSOCIATION

Delaware	1-0
Drexel	1-1
Old Dominion	1-1
Total	(60.0%) 3-2

CONFERENCE USA

UCF	1-0
Houston	1-1
Marshall	1-0
Rice	3-0
Tulane	1-1
Total	(77.8%) 7-2

HORIZON LEAGUE

Detroit	1-0
Illinois-Chicago	1-0
Wright State	1-0
Total	(100%) 3-0

INDEPENDENT

Cal State Bakersfield\$	1-0
Total	(100%) 1-0

IVY LEAGUE

Dartmouth	1-0
Harvard	2-0
Pennsylvania	2-0
Yale	1-0
Total	(100%) 6-0

METRO ATLANTIC ATHLETIC

Manhattan	1-0
Siena	1-1
Total	(66.7%) 2-1

MID-AMERICAN

Bowling Green	2-0
Buffalo	2-0
Central Michigan	2-0
Miami (Ohio)	1-0
Northern Illinois	1-0
Western Michigan	1-0
Total	(100%) 9-0

MIDEASTERN ATHLETIC

Howard	1-0
Total	(100%) 1-0

MISSOURI VALLEY

Creighton	1-2
Drake	0-1
Evansville	1-0
Illinois State	1-1
Missouri State!	2-0
Northern Iowa	0-1
Southern Illinois	3-1
Wichita State	1-0
Total	(60%) 9-6

MOUNTAIN WEST

Air Force	3-0
Brigham Young	8-7
Colorado State	30-11

New Mexico	6-6
San Diego State	1-1
Nevada-Las Vegas	0-5
Texas Christian	3-0
Utah	6-10
Wyoming	33-9
Total	(64.7%) 90-49

NORTHEAST CONFERENCE

Saint Francis (Pa.)	1-0
Total	(100%) 1-0

OHIO VALLEY

Eastern Illinois	1-0
Jacksonville State	1-0
Total	(100%) 2-0

PACIFIC 10

Arizona	6-3
Arizona State	9-0
California	4-0
UCLA	2-2
Oregon	3-8
Oregon State	2-0
Southern Cal	2-2
Stanford	3-5
Washington	6-2
Washington State	1-1
Total	(59.3%) 35-24

PATRIOT LEAGUE

American	1-0
Holy Cross	1-1
Total	(66.7%) 2-1

SOUTHEASTERN

Arkansas	2-1
Auburn	0-1
Florida	1-1
Georgia	0-1
Louisiana State	2-2
Mississippi State	1-0
Tennessee	1-3
Vanderbilt	1-4
Total	(38.1%) 8-13

SOUTHERN

College of Charleston	1-0
Georgia Southern	1-0
Total	(100%) 2-0

SOUTHLAND

Northwestern State	1-0
Sam Houston State	1-0
Stephen F. Austin	3-0
Texas State	1-1
Total	(85.7%) 6-1

SOUTHWESTERN ATHLETIC

Alcorn State	1-0
Arkansas Pine Bluff	1-0
Grambling State	1-0
Southern	1-0
Texas Southern	1-0
Total	(100%) 5-0

SUMMIT LEAGUE

Missouri-Kansas City	3-0
North Dakota State%	1-0
Oakland	1-0
Oral Roberts	1-0
South Dakota State	1-1
Southern Utah	2-0
Western Illinois	1-0
Total	(90.9%) 10-1

SUN BELT

Denver	4-1
Florida International	1-0
Louisiana-Lafayette*	1-0
Western Kentucky	1-0
Total	(87.5%) 7-1

WEST COAST

Gonzaga	3-0
Loyola Marymount	1-1
Pepperdine	3-0
Saint Mary's	3-0
San Diego	3-0
San Francisco	3-2
Santa Clara	1-0
Total	(85.0%) 17-3

WESTERN ATHLETIC

Fresno State	0-1
Louisiana Tech	1-3
Hawaii	2-0
Idaho	1-0
Nevada	1-1
New Mexico State	10-2
San Jose State	1-0
Southern Methodist	1-0
Texas-El Paso	5-0
Utah State	11-5
Total	(73.3%) 33-12

NCAA DIVISION II

Adams State	2-0
Cal-Poly Pomona	0-1
Delta State	1-0
Fort Hays State	1-0
Northern State	1-0
Total	(83.3%) 5-1

NCAA DIVISION III

Colorado College	2-0
Redlands	1-0
Simpson	1-0
Total	(100%) 4-0

NAIA

St. Francis (Ind.)	1-0
Wayland Baptist	0-2
Total	(33%) 1-3

JUNIOR COLLEGE

Temple Junior College	0-1
Total	(0%) 0-1

OTHERS

Colo. Women's College	3-0
Flatirons	1-0
Fort Carson	1-0
Helping Hand	1-0
New South Wales	0-1
Oklahoma City	1-0
Pacific Christian	1-0
Peru State	1-0
Phillips	0-1
Puerto Rico-Mayaguez	1-0
Sportsmen of Iowa	1-0
Wayne State	1-0
Winnipeg	1-0
Total	(86.7%) 13-2

* Louisiana-Lafayette was formerly Southwest Louisiana in 1993.

! Missouri State was Southwest Missouri State until 2005.

% North Dakota State was a member of NCAA II at time of game

\$ Game played in first year of transition to NCAA I

^ Includes 6-6 record while UNC was a member of NCAA II